

SOFT STARTERS

Starting from
\$603



(Shown with optional keypad)

5 - 200 HP



SSW07 Series

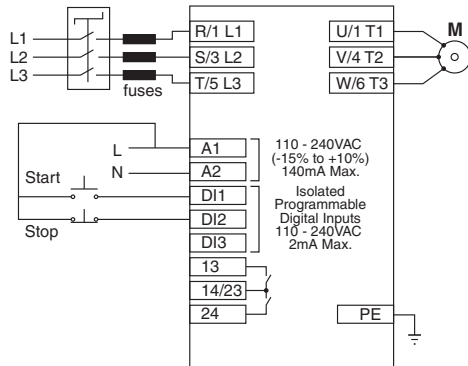
WEG SSW07 Soft Starters control the acceleration and deceleration of 3-phase induction motors by controlling the voltage applied to the motor. The Weg Soft Starter is easy to set up and it incorporates features that protect the motor and the machinery it drives. An optional keypad, communication interface or motor PTC input can be added to meet the requirements of the application.

Standard Features

- 5 to 200HP
- Universal voltage (220 to 575 VAC)
- 17 to 200 Amps
- Protected Chassis Enclosure
- Built-in bypass contactor
- Significant reduction of mechanical stresses on coupling and transmission devices (gearboxes, pulleys, gears, conveyors, etc.) during start
- Avoids the "water hammer" in pumps
- Operates in environments up to 55°C (with no derating)
- Integrated electronic motor protection

Wiring

220-575VAC 50/60Hz



Model Number	UL HP Rating			Nominal Amps	Dimensions (in.)			Price
	220/230V 3-ph	440/460V 3-ph	575V 3-ph		H	W	D	
SSW070017T5SZ	5	12.5	15	17	6.38	3.74	6.18	\$603
SSW070024T5SZ	7.5	15	20	24	6.38	3.74	6.18	\$647
SSW070030T5SZ	10	20	30	30	6.38	3.74	6.18	\$667
SSW070045T5SZ	15	30	40	45	8.2	5.57	7.94	\$761
SSW070061T5SZ	20	50	60	61	8.2	5.57	7.94	\$858
SSW070085T5SZ	30	60	75	85	8.2	5.57	7.94	\$1,038
SSW070130T5SZ	50	100	125	130	10.9	8.6	8.66	\$1,303
SSW070171T5SZ	60	125	175	171	10.9	8.6	8.66	\$1,655
SSW070200T5SZ	75	150	200	200	10.9	8.6	8.66	\$1,962

Accessories

Part Number	Description	Price
Keypads		
HMI-LOCAL-SSW07	Optional Digital Keypad (fits option slot on face of housing)	\$94
HMI-REMOTE-SSW07	Remote Keypad Kit (includes remote mounting keypad and mounting hardware; for IP-54 or NEMA 12 applications; requires remote keypad cable, listed below)	\$183
Keypad Cables		
CAB-RS-1	Remote Keypad Cable 3.3ft.	\$12
CAB-RS-2	Remote Keypad Cable 6.6ft.	\$16
CAB-RS-3	Remote Keypad Cable 10ft.	\$21
CAB-RS-5	Remote Keypad Cable 16ft.	\$27
CAB-RS-7.5	Remote Keypad Cable 25ft.	\$32
CAB-RS-10	Remote Keypad Cable 33ft.	\$38
Communications		
KRS-232-SSW07	RS-232 Modbus Communication Module	\$65
KRS-485-SSW07	RS-485 Modbus Communication Module	\$108
CAB-COMM-3	Cable for RS-232 Communication Kit (DB9-DB9) - 3m	\$39
CAB-COMM-10	Cable for RS-485 Communication Kit (DB9-DB9) - 10m	\$85
Kits		
SSW07-VENT KIT-M2	Ventilation Kit M2 (Frame Size 2; 45 - 85A)	\$27
SSW07-VENT KIT-M3	Ventilation Kit M3 (Frame Size 3; 130 - 200A)	\$51
KIT-PTC-SSW07-MOTOR	PTC Module for Monitoring Motor Thermistor	\$66
KIT-IP20-SSW07	IP20 Terminal Covers for M3 (Frame Size 3, 130 - 200A)	\$33
KSDG2-SSW07	Superdrive G2 Kit (KRS-232-SSW07+ CAB-COMM-3 + CD-Software)	\$121
Lug Kit (includes input and output lugs)		
SSW07-LK130-200	SSW07- Lug Kit - Size 3 (130 - 200A)	\$87

General Specifications

Power Source Voltage	220 to 575 VAC
Power Source Frequency	50 / 60 Hz (+/- 10%) or 45 - 66 Hz
Control Voltage	110 to 240VAC (-15% to +10%), or 94 to 264 VAC
Enclosure	Plastic; IP20 in models from 17 to 85A Plastic; P00 in models from 130 to 200A (IP20 as option)
Control Method	Voltage variation over the load (three-phase induction motor)
Starting Duty Cycle (10 Starts / Hr)	300% (3 x I _{nom}) during 30s (10 starts per hour) [Requires Ventilation Kit for Sizes 45A to 200A]
Inputs (Digital)	3 Isolated Programmable Inputs
Relay Outputs	2 relays with NO contacts, 240VAC, 1A, programmable functions
Communication (Serial)	RS-232
Safety / Protections	Undercurrent, Programming Error, Current Imbalance, Serial Communication Error, Subcurrent Before Bypass, MMI Communication Error, External Defects, Overtemperature in Motor PTC, Locked Rotor, Excess Starting Time, Frequency Outside Tolerance, By-Pass Contact Open, Undervoltage in Control Supply, Motor Overload (class 5 to 30)
Standard Features	Voltage Ramp (Initial Voltage: 30% to 90%), Current Limitation (150% to 450% of SSW07 Rated Current), Starting Time (1 to 40s), Kick Start (Off - 0.2 to 2 sec), Deceleration Ramp (0 to 40s), Motor and Current Relation (50% to 100%), Faults Auto Reset, Thermal Memory Auto Reset, Factory Standard Reset, Soft Starter Built-In By-Pass
Programming Commands	On, Off / Reset and Parameterization (function Programming)
Display Readings	Motor Current (%Soft-Starter In), Soft-Starter Status, Motor Current (%Motor In), Digital Input and Output Status, Motor Current (A), Back Up of 4 Last Errors, Current Indication in each Phase R-S-T, Soft-Starter Software Version, Supply Network Frequency, Heatsink Temperature, Apparent Power Supplied to Load (kVA), Motor Thermal Protection Status
Ambient Temperature	0 - 55°C (32 - 131°F) Standard Operation at Rated Current
Humidity	0 - 90%, Non Condensing
Altitude	0 - 1000 m (3,300 ft) Standard Operation at Rated Current
Standards	UL 508 Standard - Industrial Control Equipment

SSW06 Series Soft Starter



NEW!



Starting from

\$1,444



25 - 1500 HP

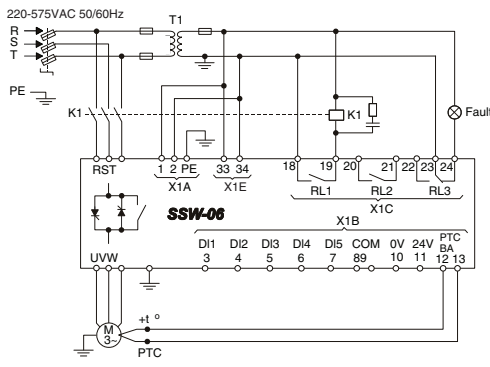
SSW06 Series Soft Starter

The SSW06 Soft Starter reduces torque in the powertrain by controlling the voltage delivered to the motor during startup. A high visibility LED display makes it easy to read the motor status from a distance. The keypad provides start, stop, and reset controls, as well as the programming interface. Integral bypass contacts are engaged once the motor is at full voltage. This removes the SCRs from the motor control circuit and eliminates most of the power loss and heat dissipation.

Standard Features

- 25 to 1500 HP
- Universal voltage input (220 to 575 V)
- Built-in bypass contactor
- LCD keypad
- Removable HMI with LED and LCD display
- Kick-Start function for high inertia loads
- Electronic motor protection
- Ambient temperature up to 55° C (131° F)

Wiring



Model Number	UL HP Rating			Nominal Amps	Dimensions (in.)			Price
	230V 3-ph	460V 3-ph	575V 3-ph		H	W	D	
SSW060085T2257ESZ	25/30	50/60	75	85	14.6	5.2	9.6	\$1,444
SSW060130T2257ESZ	50	75/100	125	130	14.6	5.2	9.6	\$1,848
SSW060170T2257ESZ	60	125	150	170	17.3	8.8	11.0	\$2,225
SSW060205T2257ESZ	75	150	200	205	17.3	8.8	11.0	\$2,789
SSW060255T2257ESZ	100	200	250	255	21.6	14.6	12.3	\$3,745
SSW060312T2257ESZ	125	250	300	312	21.6	14.6	12.3	\$4,114
SSW060365T2257ESZ	150	300	350	365	21.6	14.6	12.3	\$4,543
SSW060412T2257ESZ	150	350	450	412	26	15	14	\$4,931
SSW060480T2257ESZ	200	400	500	480	26	15	14	\$5,655
SSW060604T2257ESZ	250	500	650	604	32	22	15	\$6,307
SSW060670T2257ESZ*	250	550	750	670	32	22	15	\$7,173*
SSW060820T2257ESZ*	350	700	850	820	32	22	15	\$8,472*
SSW060950T2257ESH1Z*	400	800	1050	950	36	23	14	\$12,820*
SSW060950T2257ESH2Z*	400	800	1050	950	36	23	14	\$12,820*
SSW061100T2257ESH2Z*	450	900	1200	1100	49	27	18	\$16,078*
SSW061400T2257ESH2Z*	550	1200	1500	1400	49	27	18	\$20,664*

*Allow 9 week lead time

Accessories

Part Number	Description	Price
Keypads and Cables		
HMI-SSW06-LCD	Standard Keypad with LED & LCD	\$109
KMR-SSW06	Remote Keypad Frame Kit	\$34
CAB-HMI-SSW06-1	Remote Keypad Cable 3.3ft.	\$18
CAB-HMI-SSW06-2	Remote Keypad Cable 6.6ft.	\$21
CAB-HMI-SSW06-3	Remote Keypad Cable 10ft.	\$24
CAB-HMI-SSW06-5	Remote Keypad Cable 16ft.	\$37
Communications		
KRS-485-SSW06	RS-485 Modbus Communication Module	\$102
IP20 Kits		
KIT IP20 SSW06 M2	SSW06 IP20 Terminal Covers - Size 2 (85 - 130A)	\$113
KIT IP20 SSW06 M3	SSW06 IP20 Terminal Covers - Size 3 (170 - 205A)	\$127
KIT IP20 SSW06 M4	SSW06 IP20 Terminal Covers - Size 4 (255 - 365A)	\$137
Lug Kit		
SSW06-LK085-130	SSW06- Lug Kit - Size 2 (85 - 130A) includes input and output lugs	\$53
SSW06-LK170-205	SSW06- Lug Kit - Size 3 (170 - 205A) includes input and output lugs	\$87
SSW06-LK255-365	SSW06- Lug Kit - Size 4 (255 - 365A) includes input and output lugs	\$158

Specifications

Power Source Voltage	220 to 575 VAC (+10%, -15%)
Power Source Frequency	50 / 60 Hz (+/- 10%) or 45 - 66 Hz)
Control Voltage	110 to 230VAC (-15% to +10%), or 94 to 264 VAC
Enclosure	Metal; IP00
Control Method	Voltage Ramp, Current Limit, or Pump Control
Starting Duty Cycle	300% of rated output for 30s (10 starts per hour maximum)
Inputs (Digital)	5 (24VDC) Isolated Programmable Inputs
Relay Outputs	2 relays with NO contacts, 250VAC, 1A, programmable functions 1 relay with NO + NC contacts, 250VAC, 1A, programmable functions
Analog Outputs	1 programmable output (11 bits): 0-10VDC 1 programmable output (11 bits): 0-20mA or 4-20mA
Communication (Serial)	Standard: RS-232; Optional: RS-485
Safety / Protective Features	Under voltage, phase fault, phase imbalance; over temperature; motor overload (I ² t); external fault; copy function error; motor not connected; over voltage; programming error; communication error; keypad connection error; motor over current; motor over temperature (via thermistor input); self diagnosis error; excess current limit time; motor locked rotor; motor over/under current; current imbalance; power source frequency out of range; bypass contactor status; phase sequence
Standard Features	Built-in operator interface; local/remote operation; pump control function; copy function; integral bypass contactor; RS-232 interface; motor thermistor input; programmable: line voltage, initial voltage, accel/decel ramp, starting current limit, starting current limit and immediate under/over current limits, torque boost, motor O/L protection class, service factor
Keypad Commands	Start, Stop, Reset, and Programming Increase and Decrease Parameters
Display Readings	Soft-starter output current; motor current; line frequency (Hz); line voltage, soft-starter output voltage; active power (kW); apparent power (kVA); power factor; four last faults; firmware version; motor thermal protection; motor current indication for each phase
Ambient Temperature	0 - 55°C (32 - 131°F) Standard Operation at Rated Current
Humidity	0 - 90%, Non Condensing
Altitude	0 - 1000 m (3,300 ft) Standard Operation at Rated Current
Standards	UL 508 Standard – Industrial Control Equipment

FREE Ground Shipping!
for online orders over \$500



Combination Soft Starter



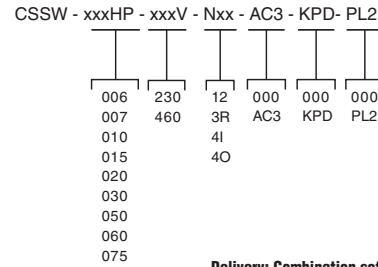
Up to 1200 HP

Starting from **\$1,475**

Features

- 6 to 1200 HP
- 230 or 460VAC
- NEMA 1/12, 3R, 4 (optional rain shield)
- MCCB with through door disconnect, standard
- Start/Stop Pushbuttons, standard
- Control transformer, standard
- Optional door mounted keypad and pilot lights
- Optional AC3 bypass, includes:
 - Contactor
 - Overload
 - HOA switch

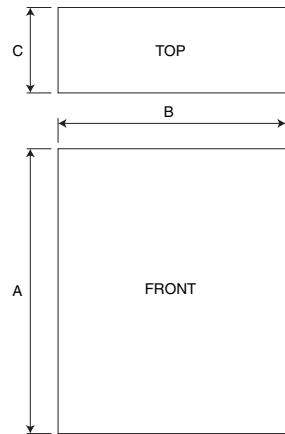
Quick Selection Guide:



Delivery: Combination soft starters typically ship within 2-3 weeks after receipt of order

Enclosure Dimensions

DIM	A x B x C (in)
SA	16 x 12 x 8
SB	24 x 20 x 12
SC	40 x 32 x 12
SD	48 x 30 x 10
SE	72 x 72 x 18
SF	90 x 72 x 20
SG	86 x 112 x 20



*Note: NEMA 4 rain/sun shield is included for outdoor installations (enclosure option "-N40"). Dimensions do not include this additional shield.

230VAC

Part Number	Max HP	FLA	NEMA 1/12 (-N12)		NEMA 3R (-N3R)		NEMA 4 Indoor (-N4I)		NEMA 4 Outdoor* (-N4O)		Options			
			DIM	Price	DIM	Price	DIM	Price	DIM	Price	AC3 Bypass (-AC3)	Door Mounted Keypad (-KPD)	Run/Fault Pilot Lights (-PL2)	
SSW07 Soft Start in Wall-mount Enclosure												Price Adder		
CSSW-006HP-230V	6	17	SA	\$1,475	SA	\$1,570	SA	\$1,600	SA	\$1,677	\$136	\$268	\$103	
CSSW-007HP-230V	7.5	24	SA	\$1,559	SA	\$1,654	SA	\$1,684	SA	\$1,761	\$152	\$268	\$103	
CSSW-010HP-230V	10	30	SA	\$1,609	SA	\$1,704	SA	\$1,733	SA	\$1,812	\$185	\$268	\$103	
CSSW-015HP-230V	15	45	SB	\$1,852	SB	\$1,976	SB	\$2,040	SB	\$2,157	\$305	\$268	\$103	
CSSW-020HP-230V	20	61	SB	\$2,069	SB	\$2,193	SB	\$2,257	SB	\$2,375	\$331	\$268	\$103	
CSSW-030HP-230V	30	85	SB	\$2,616	SB	\$2,739	SB	\$2,803	SB	\$2,921	\$424	\$268	\$103	
CSSW-050HP-230V	50	130	SC	\$3,278	SC	\$3,472	SD	\$3,665	SD	\$3,885	\$686	\$268	\$103	
CSSW-060HP-230V	60	171	SC	\$3,933	SC	\$4,127	SD	\$4,320	SD	\$4,542	\$818	\$268	\$103	
CSSW-075HP-230V	75	200	SC	\$4,365	SC	\$4,560	SD	\$4,753	SD	\$4,973	\$1,028	\$268	\$103	
SSW06 Soft Start in Free Standing Floor-mount Enclosure												Price Adder		
CSSW-100HP-230V	100	255	SE	\$7,822	SE	\$8,334	SE	\$8,557	SE	\$9,181	\$1,225	\$163	\$103	
CSSW-125HP-230V	125	312	SE	\$8,069	SE	\$8,582	SE	\$8,805	SE	\$9,428	\$1,605	\$163	\$103	
CSSW-150HP-230V	150	365	SE	\$9,171	SE	\$9,685	SE	\$9,907	SE	\$10,531	\$1,625	\$163	\$103	

460VAC

Part Number	Max HP	FLA	NEMA 1/12 (-N12)		NEMA 3R (-N3R)		NEMA 4 Indoor (-N4I)		NEMA 4 Outdoor* (-N4O)		Options			
			DIM	Price	DIM	Price	DIM	Price	DIM	Price	AC3 Bypass (-AC3)	Door Mounted Keypad (-KPD)	Run/Fault Pilot Lights (-PL2)	
SSW07 Soft Start in Wall-mount Enclosure												Price Adder		
CSSW-012HP-460V	12.5	17	SA	\$1,475	SA	\$1,570	SA	\$1,600	SA	\$1,677	\$136	\$268	\$103	
CSSW-015HP-460V	15	24	SA	\$1,559	SA	\$1,654	SA	\$1,684	SA	\$1,761	\$152	\$268	\$103	
CSSW-020HP-460V	20	30	SA	\$1,609	SA	\$1,704	SA	\$1,733	SA	\$1,812	\$185	\$268	\$103	
CSSW-030HP-460V	30	45	SB	\$1,852	SB	\$1,976	SB	\$2,040	SB	\$2,157	\$305	\$268	\$103	
CSSW-050HP-460V	50	61	SB	\$2,069	SB	\$2,193	SB	\$2,257	SB	\$2,375	\$331	\$268	\$103	
CSSW-060HP-460V	60	85	SB	\$2,616	SB	\$2,739	SB	\$2,803	SB	\$2,921	\$424	\$268	\$103	
CSSW-100HP-460V	100	130	SC	\$3,278	SC	\$3,472	SD	\$3,665	SD	\$3,885	\$686	\$268	\$103	
CSSW-125HP-460V	125	171	SC	\$3,933	SC	\$4,127	SD	\$4,320	SD	\$4,542	\$818	\$268	\$103	
CSSW-150HP-460V	150	200	SC	\$4,365	SC	\$4,560	SD	\$4,753	SD	\$4,973	\$1,028	\$268	\$103	
SSW06 Soft Start in Free Standing Floor-mount Enclosure												Price Adder		
CSSW-200HP-460V	200	255	SE	\$7,822	SE	\$8,334	SE	\$8,557	SE	\$9,181	\$1,225	\$163	\$103	
CSSW-250HP-460V	250	312	SE	\$8,069	SE	\$8,582	SE	\$8,805	SE	\$9,428	\$1,605	\$163	\$103	
CSSW-300HP-460V	300	365	SE	\$9,171	SE	\$9,685	SE	\$9,907	SE	\$10,531	\$1,625	\$163	\$103	
CSSW-350HP-460V	350	412	SE	\$9,999	SE	\$10,512	SE	\$10,735	SE	\$11,358	\$3,555	\$163	\$103	
CSSW-400HP-460V	400	480	SE	\$11,828	SE	\$12,340	SE	\$12,564	SE	\$13,186	\$3,555	\$163	\$103	
CSSW-500HP-460V	500	604	SF	\$13,137	SF	\$13,745	-	-	-	-	\$3,640	\$163	\$103	
CSSW-550HP-460V	550	670	SF	\$15,299	SF	\$15,907	-	-	-	-	\$5,173	\$163	\$103	
CSSW-700HP-460V	700	800	SF	\$17,703	SF	\$18,311	-	-	-	-	\$5,626	\$163	\$103	
CSSW-800HP-460V	800	950	SG	\$27,378	SG	\$28,281	-	-	-	-	\$11,868	\$163	\$103	
CSSW-900HP-460V	900	1100	SG	\$30,244	SG	\$31,148	-	-	-	-	\$12,037	\$163	\$103	
CSSW-1200HP-460V	1200	1400	SG	\$36,458	SG	\$37,362	-	-	-	-	\$39,306	\$163	\$103	