

SENSORS

Gauge Pressure Transducers

NEW!

KITEL™

The PT03G and PT04G series gauge pressure transducers use reliable piezoresistance strain gauge technology. This is the preferred sensing technology for applications where quick response to pressure changes is required. These transducers feature a 316SS housing with a male electrical connector ready to receive a mating cable (purchased separately). One year manufacturer's warranty.

Features

- Input voltage 12-36VDC
- 0-15 psig to 0-5000 psig ranges
- 1/4" NPT male fitting
- 4-20mA or 0-5VDC output
- 316 stainless steel housing

from

\$115

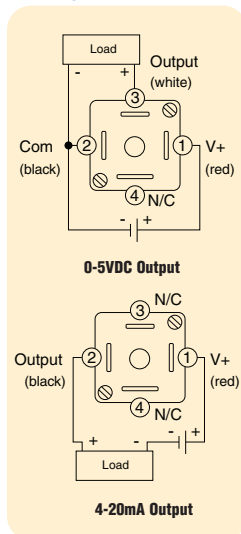
PT03G



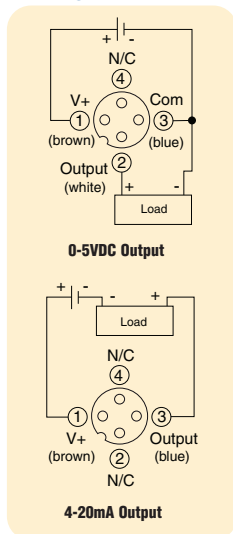
PT04G



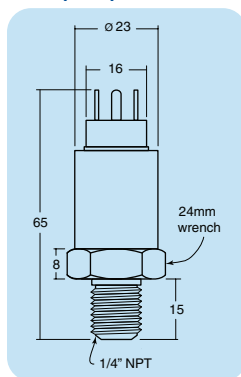
Wiring



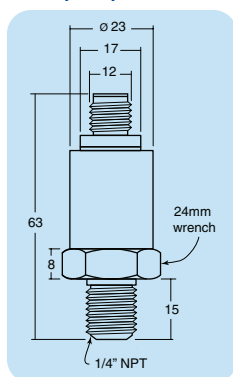
Wiring



DIM (mm)



DIM (mm)



PT03G Series

Part Number	Pressure Range	Accuracy	Connection	Output	Price
PT03G-0015-0420C	0-15 psig	1%	9.4mm Mini DIN, IP65	4-20mA	\$115
PT03G-0015-0005V				0-5VDC	\$115
PT03G-0025-0420C	0-25 psig	1%	9.4mm Mini DIN, IP65	4-20mA	\$115
PT03G-0025-0005V				0-5VDC	\$115
PT03G-0050-0420C	0-50 psig	1%	9.4mm Mini DIN, IP65	4-20mA	\$115
PT03G-0050-0005V				0-5VDC	\$115
PT03G-0100-0420C	0-100 psig	1%	9.4mm Mini DIN, IP65	4-20mA	\$115
PT03G-1000-0005V				0-5VDC	\$115
PT03G-0250-0420C	0-250 psig	1%	9.4mm Mini DIN, IP65	4-20mA	\$115
PT03G-0250-0005V				0-5VDC	\$115
PT03G-0500-0420C	0-500 psig	1%	9.4mm Mini DIN, IP65	4-20mA	\$115
PT03G-0500-0005V				0-5VDC	\$115
PT03G-1000-0420C	0-1000 psig	1%	9.4mm Mini DIN, IP65	4-20mA	\$115
PT03G-1000-0005V				0-5VDC	\$115
PT03G-3000-0420C	0-3000 psig	1%	9.4mm Mini DIN, IP65	4-20mA	\$115
PT03G-3000-0005V				0-5VDC	\$115
PT03G-5000-0420C	0-5000 psig	1%	9.4mm Mini DIN, IP65	4-20mA	\$115
PT03G-5000-0005V				0-5VDC	\$115

Mating Cables for PT03G

Part Number	Description	Price
CBL944-01	9.4mm Mini DIN, 1 m (3.28 ft), shielded cable, IP65	\$16
CBL944-03	9.4mm Mini DIN, 3 m (9.84 ft), shielded cable, IP65	\$29
CBL944-06	9.4mm Mini DIN, 6 m (19.69 ft), shielded cable, IP65	\$41

PT04G Series

Part Number	Pressure Range	Accuracy	Connection	Output	Price
PT04G-0015-0420C	0-15 psig	0.4%	M12, IP67	4-20mA	\$169
PT04G-0015-0005V				0-5VDC	\$169
PT04G-0025-0420C	0-25 psig	0.4%	M12, IP67	4-20mA	\$169
PT04G-0025-0005V				0-5VDC	\$169
PT04G-0050-0420C	0-50 psig	0.4%	M12, IP67	4-20mA	\$169
PT04G-0050-0005V				0-5VDC	\$169
PT04G-0100-0420C	0-100 psig	0.4%	M12, IP67	4-20mA	\$169
PT04G-0100-0005V				0-5VDC	\$169
PT04G-0250-0420C	0-250 psig	0.4%	M12, IP67	4-20mA	\$169
PT04G-0250-0005V				0-5VDC	\$169
PT04G-0500-0420C	0-500 psig	0.4%	M12, IP67	4-20mA	\$169
PT04G-0500-0005V				0-5VDC	\$169
PT04G-1000-0420C	0-1000 psig	0.4%	M12, IP67	4-20mA	\$169
PT04G-1000-0005V				0-5VDC	\$169
PT04G-3000-0420C	0-3000 psig	0.4%	M12, IP67	4-20mA	\$169
PT04G-3000-0005V				0-5VDC	\$169
PT04G-5000-0420C	0-5000 psig	0.4%	M12, IP67	4-20mA	\$169
PT04G-5000-0005V				0-5VDC	\$169

Mating Cables for PT04G

Part Number	Description	Price
CBLM124RN-01	M12 right angle, 1 m (3.28 ft), shielded cable, IP67	\$22
CBLM124RN-03	M12 right angle, 3 m (9.84 ft), shielded cable, IP67	\$29
CBLM124RN-06	M12 right angle, 6 m (19.69 ft), shielded cable, IP67	\$41

General Specifications

Supply Voltage	12-36VDC
Proof Pressure	1.5 x full scale
Burst Pressure	3 x full scale
Compensated Temp Range	-10 to 75°C (14 to 167°F)
Operating Temperature	-20 to 80°C (-4 to 176°F)
Zero and Span Tolerance	1.5%
Pressure Port	1/4" NPT
Housing	316SS
Diaphragm Material	0-75psi: 316SS; 100-1,000psi: ceramic; 1,500-10,000psi: 17-4SS
Sealing Material	Neoprene